

TraFFix Devices Inc.



TraFFix Channelizer Drum™

Engineered Products for Safer Highways



Low
Density



High Density

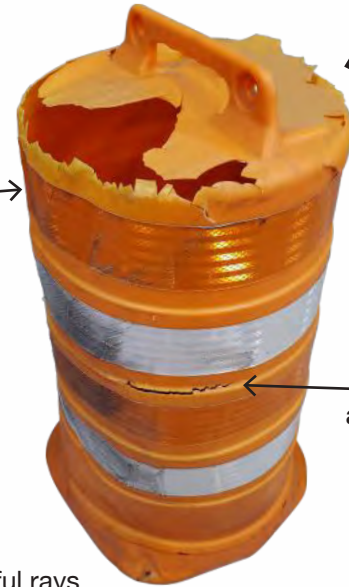


Contractor



The Other Drums

UV fading →



← Thin walls

← Cracking after impacts

- The industry's best made drum. Reusable after multiple impacts.
- Meets or exceeds MUTCD specifications
- 18" wide & 36" high regardless of orientation
- UV inhibitors and quality colorants minimize fading from the sun's harmful rays.
- Tapered design allows stacking with or without barricade lights for easy handling and storage.
- Gentle curves throughout drum eliminate sharp edges or corners that crack and split when impacted.
- Recessed areas accommodate and protect reflective sheeting.
- Drum and base remain "snapped together" until impacted or separated for transportation and storage.
- Built-in carrying and dragging handle.
- Two mounting holes for optional barricade lights.
- 100% Recycled Rubber Base for increased durability and road grip that resists movement from passing vehicles.

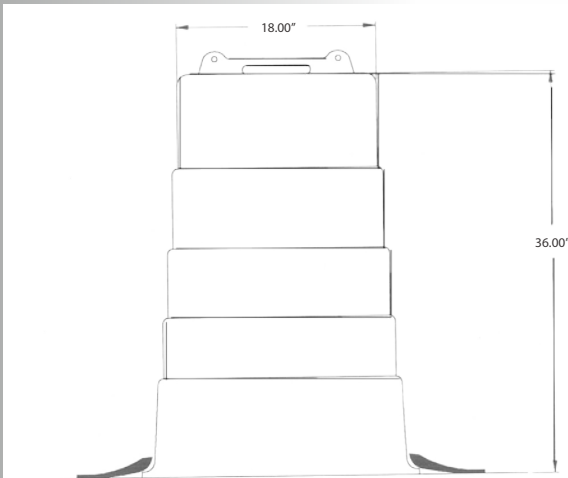


TraFFix Channelizer Drum™



TraFFix Channelizer Drum Specification

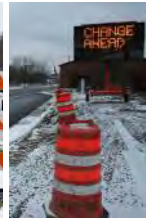
TraFFix Channelizer drum to be minimum 18" wide throughout its 36" height, regardless of orientation. "D" shape design minimizes rolling after impact. Must be NTPEP tested & meets MUTCD. Available in three variations: high density, low density, or contractor low density. Four base options: sand bag, san-fil, recycled rubber, or tire ring ballast.



18" wide & 36" high regardless of orientation



Durable High Density Polyethylene stands strong in scorching summers



Reshapeable Low Density Polyethylene withstands rugged snowy winters



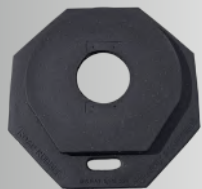
Delineate traffic lanes during resurfacing work



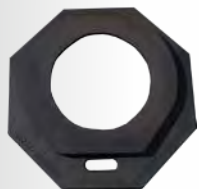
Shoulder side of road buffer



Two Mounting Holes for Optional Barricade Lights - Tapered Design allows stacking with or without barricade lights for easy handling and storage



40# Recycled Rubber Base
#18040-RUB



25# Recycled Rubber Base
#18025-RUB



25# Tire Ring Base
#18020-TRB



San-Fil Base
#18005-SFB



Sand Bag Base
#18003-A



160 Avenida La Pata, San Clemente, CA 92673
(949) 361-5663 FAX (949) 361-9205
www.traffixdevices.com

Distributed by: